



NYC Parks

VALENTINO PARK COMFORT STATION

Located near Coffey Street and Ferris Street
in Red Hook, in the borough of Brooklyn

PDC Concept Design Review
September 15, 2014
nARCHITECTS, Parks Capital Design



LINES OF SIGHT TO STATUE OF LIBERTY

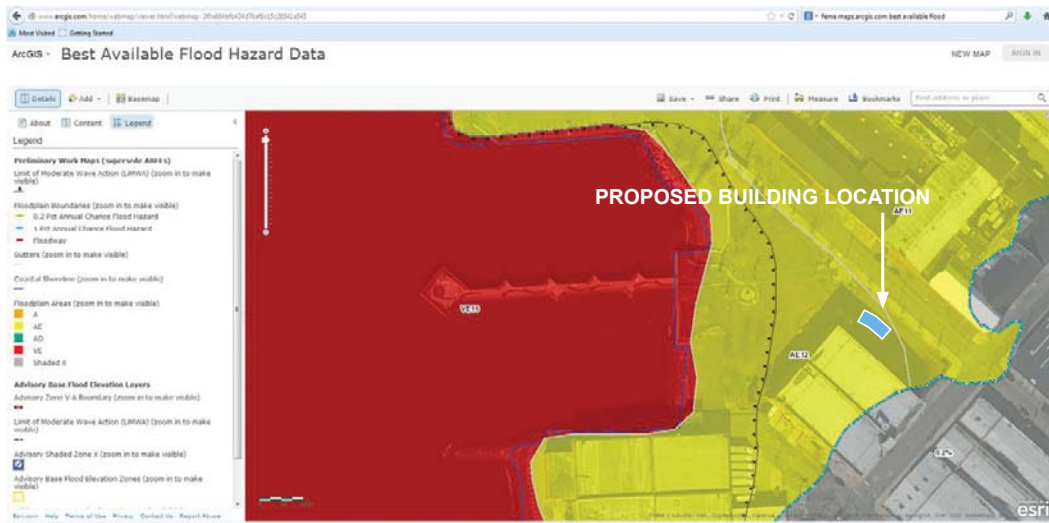


SITE LOCATION MAP

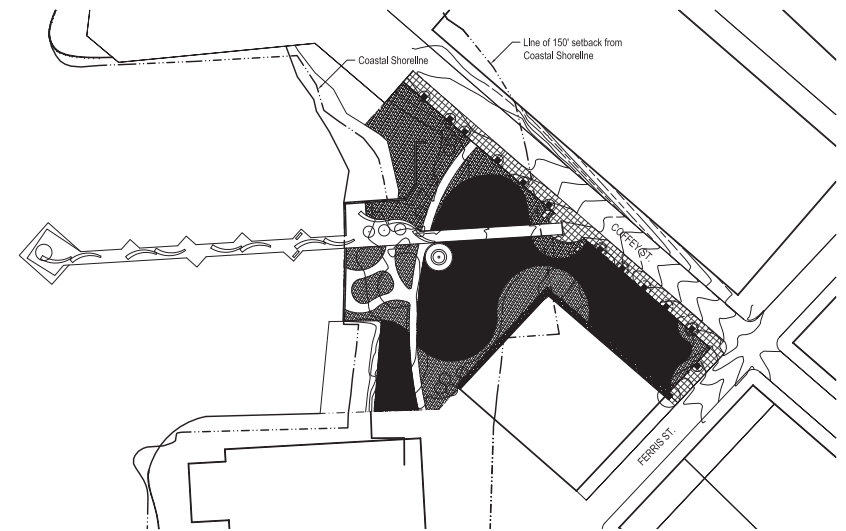


NYC Parks





FEMA BASE FLOOD ELEVATION MAP



EXISTING SITE PLAN

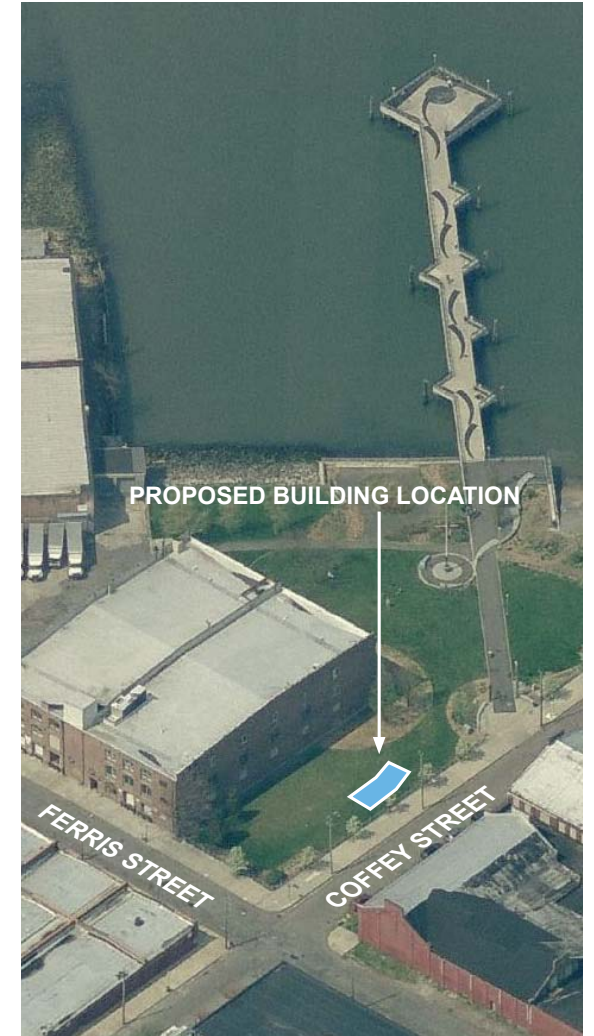


NYC Parks





BIRD'S EYE VIEW LOOKING NORTH

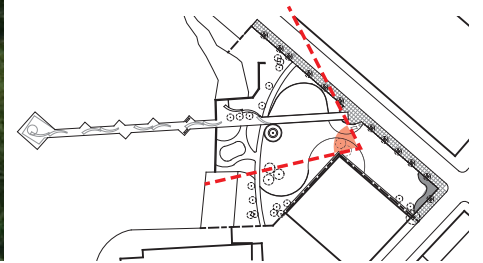


BIRD'S EYE VIEW LOOKING WEST



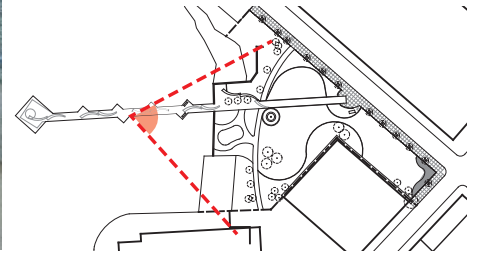
NYC Parks

VALENTINO PARK COMFORT STATION | Bird's Eye View Looking North and West
nARCHITECTS



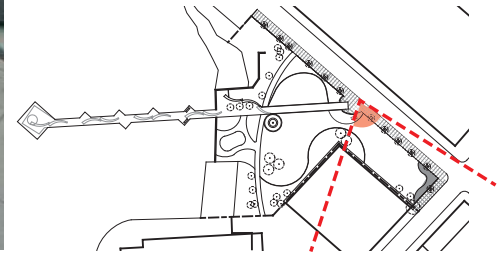
NYC Parks

VALENTINO PARK COMFORT STATION | Site Picture: View from Building Looking to Pier
nARCHITECTS



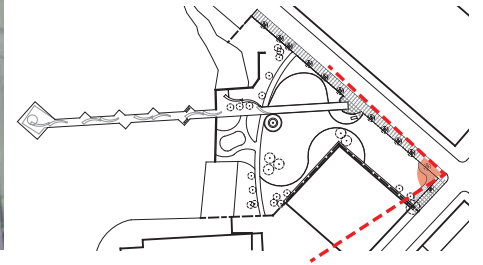
NYC Parks

VALENTINO PARK COMFORT STATION | Site Picture: View from Pier Looking East
nARCHITECTS



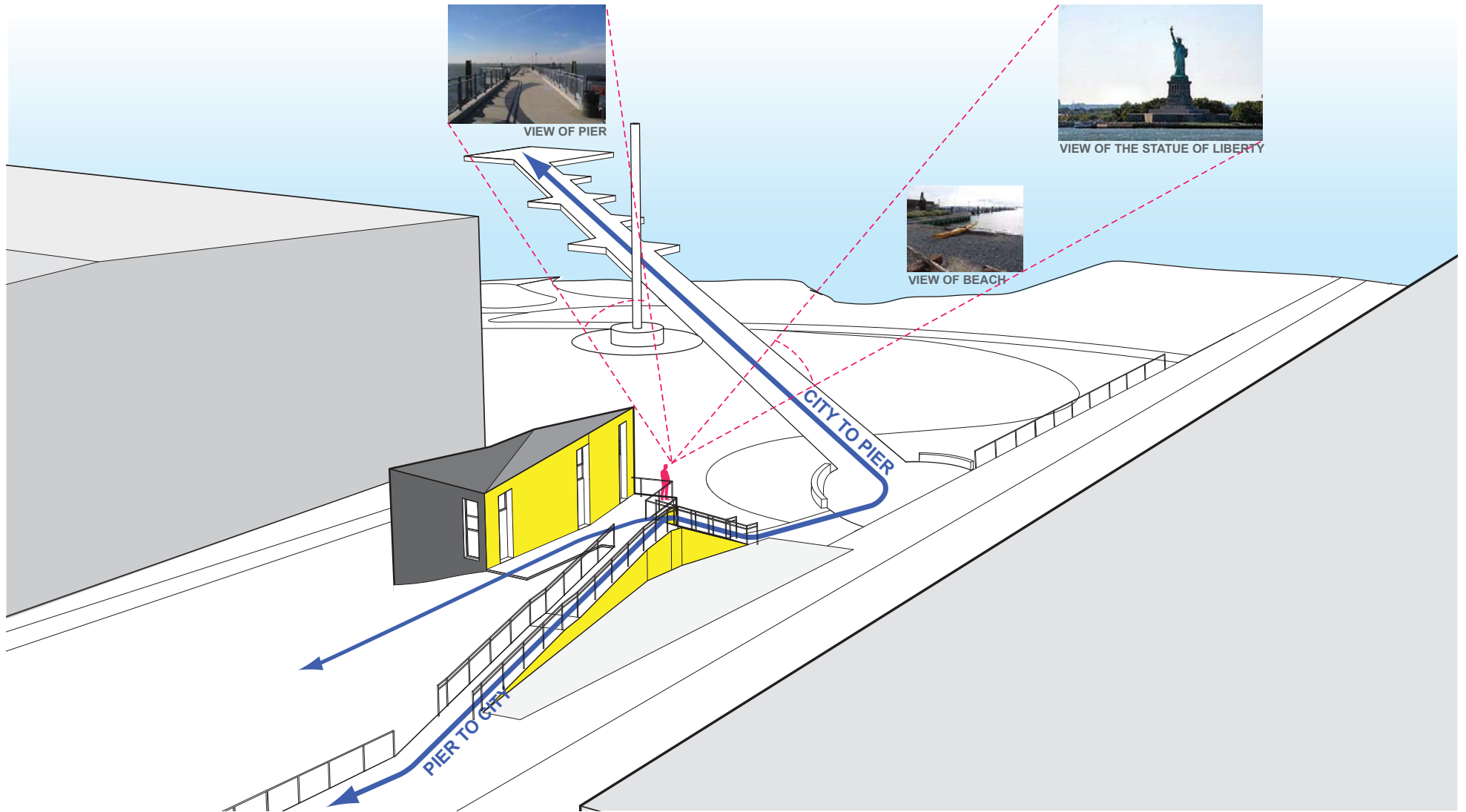
NYC Parks

VALENTINO PARK COMFORT STATION | Site Picture: View from Entrance of the Park Looking Southeast
nARCHITECTS



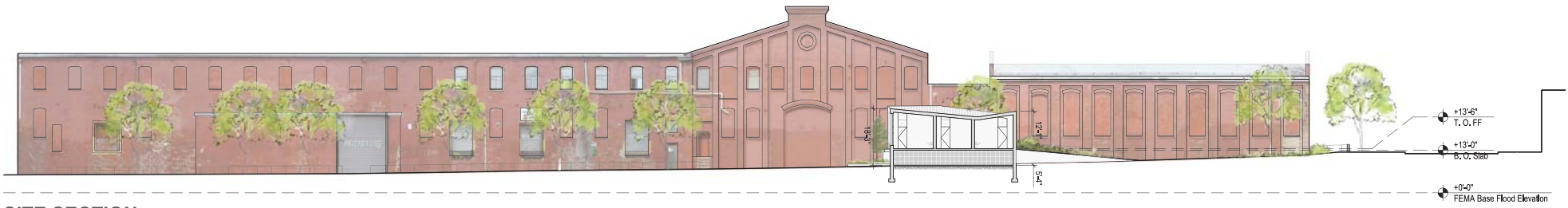
NYC Parks

VALENTINO PARK COMFORT STATION | Site Picture: View from Sidewalk Looking West
nARCHITECTS

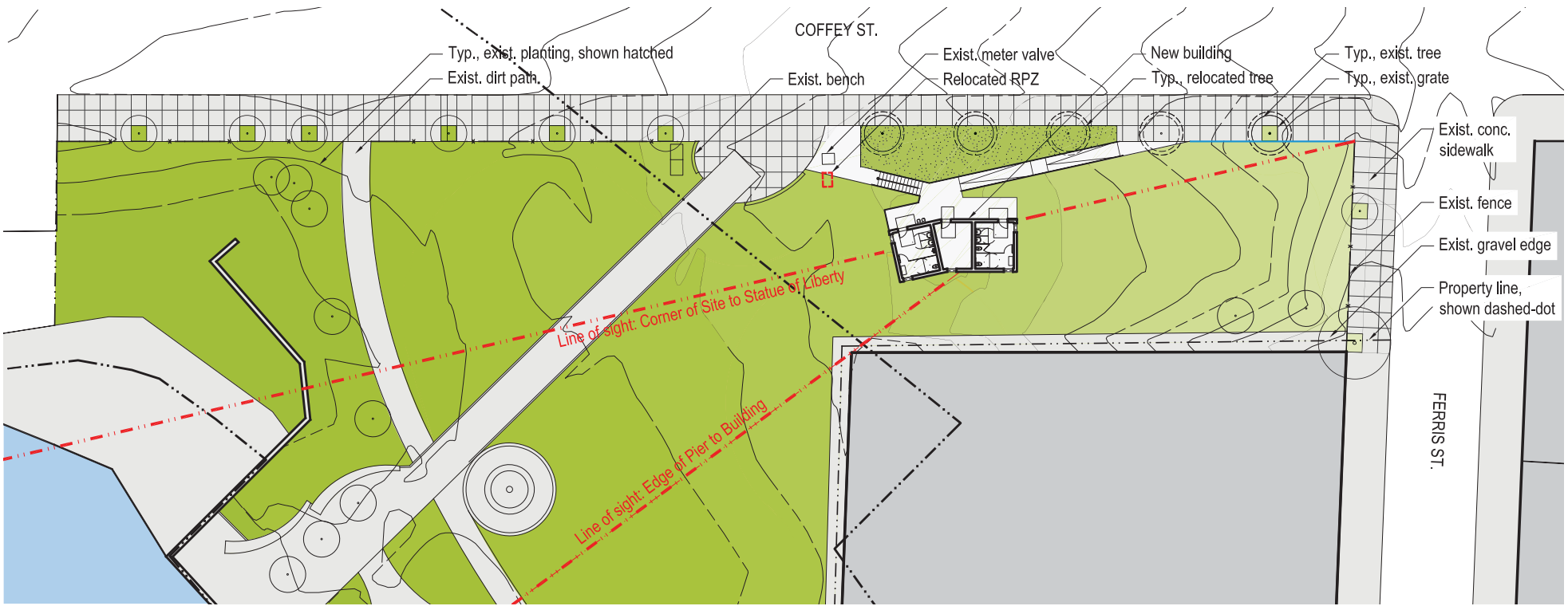


NYC Parks

VALENTINO PARK COMFORT STATION | Site Connections and Flow
nARCHITECTS



SITE SECTION



SITE PLAN





NYC Parks

VALENTINO PARK COMFORT STATION | Proposed Plan: Landscape
nARCHITECTS



SCALE: 1/16" = 1'-0"



NYC Parks

VALENTINO PARK COMFORT STATION | View of Comfort Station looking Southeast
nARCHITECTS



NYC Parks

VALENTINO PARK COMFORT STATION | View of Comfort Station looking West
nARCHITECTS