



PortSide NewYork

A living lab for better urban waterways. We bring WaterStories to life.

PortSide brings the community ashore and community afloat closer together.

Trying to create a maritime hub that combines working waterfront, public access and community development.

Design for Action
#Piers4Boats
Activate the BLUEspace

Water is *more* than something to *look at*.

The most *resilient* pier sustains *multiple uses*

Activation

PortSide

TankerOpera





Activation

PortSide

Dutch Flat Bottom Fleet



Activation

PortSide

TankerTours at a salsa concert



Activation

PortSide

Visiting vessels

burlesque on historic ship




Activation

PortSide
school visit

500,000 people evacuated in less than 9 hours.

Activation

by Al Queda 9/11/2001



Rubble removed by water via emergency barge ports.
Using barges reduced the time to clear grounds zero from 2 years
to 8 months and kept traffic and toxic dust from the streets

Activation

by Al Queda 9/11/2001

Edge design impeded 9/11 rescue

more info at <http://portsidenewyork.org/911-maritime-response/>





Vision 2020

Focus on the “Sixth Borough”

Goal 3: Support working waterfront

Goal 6: Enhance the blue Network

Released 2011

Don't let Sandy drown a good idea

A photograph of a flooded industrial yard at night. The ground is covered in water, reflecting the lights from buildings in the background. A large white structure is visible on the right side of the frame.

10/29/12

FEMA and MARAD \$

WALLS or APERTURES?



MARAD – US Maritime Admin

M95 marine highway
parallel to I95 land highway

2011 domestic freight by water:



Future maritime activity

Increased
moving of
freight by water
within the
region, within
NYC

Increased
passenger
ferries

We can't jam all this into the same old places.

New port spaces are needed.

Ways to combine working waterfront and
other uses are needed.

“This is a park. Tugboats can’t come here,”
NYC Parks Department official



Why not?

Solutions: Mixed uses

Fish dock & tourist attraction
Menemsha, Martha's Vineyard



Portland, Maine

The main street with restaurants and boutiques runs parallel to this active waterfront.

Cruise Terminal

Condos


Megayachts

Services to fishboats

Fishboat dock

Ship repair dry dock





“We never plan to have boats here,”
Park official

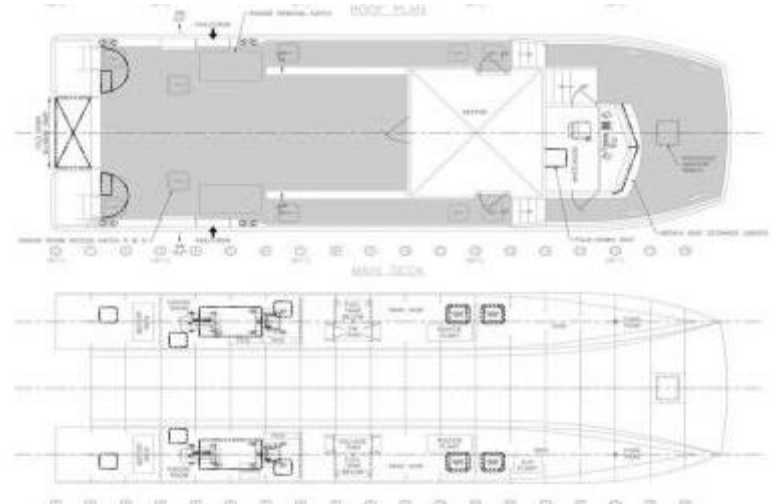
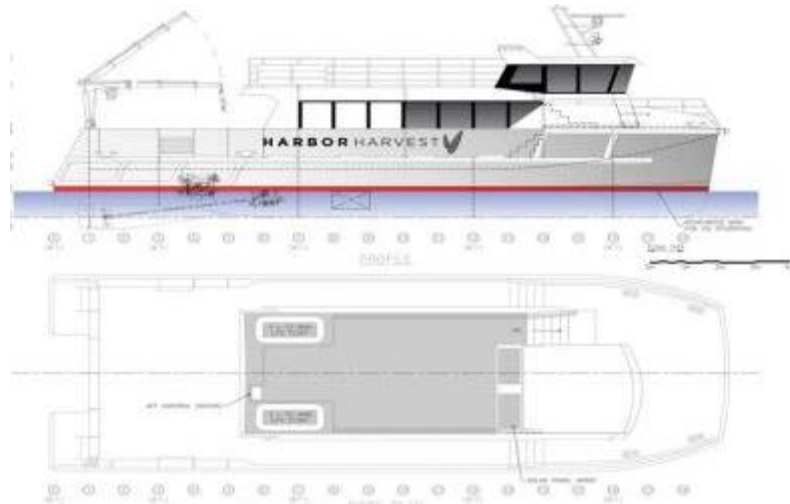
Why not?

Don't put fence between water and bollards

Farm to table

Hybrid, refrigerated, freight ferry from Long Island farms to Connecticut
from Hudson River valley farms to NYC

“gentrified maritime” looks like a passenger ferry so it can go into marinas and non-industrial locations.



NYC Design issues: Fences

Brooklyn Cruise Terminal



Sydney, Australia Cruise
Terminal bustling pier



Solutions: no fences

Baltimore waterfront





Things *not* to have:

Impediments to docking boats

Fences in between the cleats/bollards and the water

Fences with sections that are hard to remove for temporary docking

Benches in front of gangways

Pier shapes that impede boat docking



Things to have:

Solutions for infrastructure for docking boats



Cleats or bollards
Boats tie up to them



Fendering
Protects boat and pier



Freeboard
Pier height, needs to correspond to height of docking boats